

# Temperature Sensors

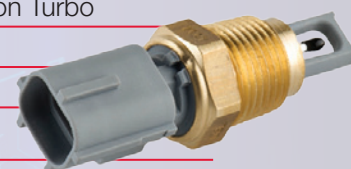
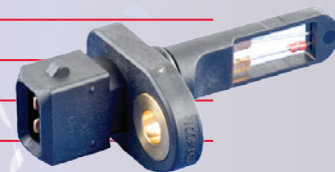
The Fuelmiser Euro range has continued to expand with various additions to suit a larger scope of European vehicles. Check out some of our great Temperature Sensors we have sourced from FACET, one of our many quality manufacturers.

## CAT024 AUDI

A3	1.8L AGN,APG, AUM DOHC 20v 4cyl Turbo / Non Turbo
A4	1.8L AEB DOHC 20v Turbo 4cyl
A4	2.4L AGA,APS DOHC-PB 30v V6
A4	2.8L APR DOHC-PB 30v V6
A6	2.4L BDV DOHC-PB 30v V6
A6	2.8L ACK DOHC-PB 30v V6
A6	3.0L ASN DOHC-PB 30v V6
TT	1.8L BAM DOHC 20v Turbo 4cyl

## VOLKSWAGEN

Bora	2.3L AGZ SOHC-PB 10v V5
Bora	2.3L AQN DOHC-PB 20v V5
Golf	1.8L AGU DOHC 20v Turbo 4cyl
Golf	1.8L ADZ SOHC 8v 4cyl
Golf	1.8L AGU DOHC 20v Turbo 4cyl
Passat	1.8L ADR, AEB, APT & ADR DOHC 20v 4cyl Turbo / Non Turbo
Passat	2.8L ACK,AMX,APR DOHC-PB 30v V6
Passat	2.8L BBG DOHC-PB 30v V6



## CAT025 FORD

Transit	2.0L NS# DOHC 16v 4cyl
Transit	2.5L 4E# OHV 8v Turbo diesel direct inj. 4cyl

## CAT028 FORD

Everest	3.2L Duratorq P5AT DOHC 20v Turbo diesel direct inj. 5cyl
Fiesta	1.6L Duratec DOHC 16v MPFI 4cyl
Fiesta	1.6L & 2.0L Duratorq DOHC 16v Turbo diesel direct inj. 4cyl
Mondeo	2.0L Duratorq DOHC 16v Turbo diesel direct inj. 4cyl
Ranger	3.2L Duratorq P5AT DOHC 20v Turbo diesel direct inj. 5cyl



## PEUGEOT

308	2.0L DW10BTED4 (PSA RHR) DOHC 16v Turbo diesel inj. 4cyl
308	2.0L DW10CTED4 (PSA RHH) DOHC 16v Turbo diesel direct inj. 4cyl
308	2.0L RH8# DOHC 16v Turbo diesel direct inj. 4cyl
407	2.0L DW10BTED DOHC 16v Turbo diesel inj. 4cyl

**For a more detailed application listing visit [www.fuelmiser.co.nz](http://www.fuelmiser.co.nz)**

Information on this sheet is prepared as a customer aid, from reliable information, with the utmost care and should not be used for any other purpose. Motospecs reserves the right to make product or publication changes at any time without notice.  
© Copyright Motospecs, all rights reserved.

# Temperature Sensors

## CAT033 MERCEDES

A140	1.4L M166 E14 SOHC 8v 4cyl
A150	1.5L M266 E15 SOHC 8v 4cyl
A160	1.6L M166 E16 SOHC 8v 4cyl
A180	2.0L OM266 DOHC 16v Turbo diesel direct inj. 4cyl
A190	1.9L M166 E19 SOHC 8v 4cyl
A200	2.0L M266 E20 SOHC 8v 4cyl Turbo / Non Turbo
B180	2.0L OM640 DOHC 16v Turbo diesel inj. 4cyl
B200	2.0L M266 E20 SOHC 8v 4cyl Turbo / Non Turbo
C180	1.8L M271 E18 DOHC 16v Supercharged 4cyl
C180	1.8L M111 E18 DOHC 16v 4cyl
C200	1.8L M271 E18 DOHC 16v Supercharged 4cyl
C200	2.0L M111 E20 DOHC 16v 4cyl
C220	2.1L OM646 DOHC 16v Turbo diesel direct inj. 4cyl
C250	1.8L M271 DE18 DOHC 16v Turbo petrol direct inj. 4cyl
E200K	1.8L M271 E18 DOHC 16v Supercharged 4cyl
ML320	3.0L OM642 DOHC-PB 24v Turbo diesel direct inj. V6
SLK200	1.8L M271 E18 DOHC 16v Supercharged 4cyl
VITO	2.1L OM611 DOHC 16v Turbo diesel inj. 4cyl
AMG E55	5.4L M113 E55 SOHC-PB 24v Supercharged V8



## SSANGYONG

Korando	2.3L M161 E23 DOHC 16v MPFI 4cyl
---------	----------------------------------

## CAT034 PEUGEOT

206	2.0L EW10J4 DOHC 16v 4cyl
307	2.0L 10LH89 DOHC 16v 4cyl
307	2.0L EW10J4 DOHC 16v 4cyl
407	2.2L 10LJ3 4cyl



## CAT037 AUDI

A3	1.8L BYT,BZB DOHC 16v Turbo petrol direct inj. 4cyl
A3	1.8L CDAA,CEAA DOHC 16v Turbo petrol direct inj. 4cyl
A3	2.0L AXW,BLY,BMB,BVY DOHC 16v Petrol direct inj. 4cyl
A3	2.0L AXX,BWA DOHC 16v Turbo petrol direct inj. 4cyl
A3	2.0L CAWB,CCZA DOHC 16v Turbo petrol direct inj. 4cyl
A4	1.8L CABB,CDHB DOHC 16v Turbo petrol direct inj. 4cyl
A4	2.0L ALT DOHC 20v 4cyl

**For a more detailed application listing visit [www.fuelmiser.co.nz](http://www.fuelmiser.co.nz)**

Information on this sheet is prepared as a customer aid, from reliable information, with the utmost care and should not be used for any other purpose. Motospecs reserves the right to make product or publication changes at any time without notice.  
© Copyright Motospecs, all rights reserved.



# Temperature Sensors

## CAT037 AUDI

A4	2.0L BGB DOHC 16v Turbo petrol direct inj. 4cyl
A4	2.0L BWE DOHC 20v Turbo 4cyl
A4	2.0L CDNB, CDNC DOHC 16v Turbo 4cyl
A4	2.4L AGA,APS, BDV DOHC-PB 30v V6
A5	1.8L CJEB DOHC 16v Turbo petrol direct & multi-point inj. 4cyl
A5	2.0L CNCD & CDNB DOHC 16v Turbo petrol direct inj. 4cyl
A6	2.0L BPJ DOHC 16v Turbo petrol direct inj. 4cyl
A6	2.0L CDNB DOHC 16v Turbo 4cyl
A6	3.0L CDYA DOHC-PB 24v Turbo diesel direct inj. V6
A6 ALLROAD	2.7L ARE DOHC-PB 30v Twin-turbo V6
Q5	2.0L CDNC DOHC 16v Turbo petrol direct inj. 4cyl
Q5	3.0L CCWA DOHC-PB 24v Turbo diesel direct inj. V6
Q5	3.0L CTVA DOHC-PB 24v Supercharged petrol direct inj. V6
S3	2.0L BZC DOHC 16v Turbo petrol direct inj. 4cyl
S3	2.0L CDLC DOHC 16v Turbo petrol direct inj. 4cyl
TT	1.8L CDAA,CEAA DOHC 16v Turbo petrol direct inj. 4cyl
TT	2.0L BWA DOHC 16v Turbo petrol direct inj. 4cyl



## SKODA

Octavia	1.8L BYJ,BZB DOHC 16v Turbo petrol direct inj. 4cyl
Octavia	1.8L CDAA,CEAA DOHC 16v Turbo petrol direct inj. 4cyl
Octavia	2.0L BLR,BLX,BVY DOHC 16v Petrol direct inj. 4cyl
Octavia	2.0L BWA DOHC 16v Turbo petrol direct inj. 4cyl
Octavia	2.0L CCZA DOHC 16v Turbo petrol direct inj. 4cyl
Superb	1.8L CDAA,CEAA DOHC 16v Turbo petrol direct inj. 4cyl
Yeti	1.8L CDAB DOHC 16v Turbo petrol direct inj. 4cyl

## VOLKSWAGEN

EOS	2.0L CCZB DOHC 16v Turbo petrol direct inj. 4cyl
EOS	2.0L BWA DOHC 16v Turbo petrol direct inj. 4cyl
Golf	1.8L AGU DOHC 20v Turbo 4cyl
Golf	2.0L AXX BWA, CCZB, CDLG, CDLC DOHC 16v Turbo petrol direct inj. 4cyl
Golf	2.0L BLR,BLX,BVY DOHC 16v Petrol direct inj. 4cyl
Jetta	2.0L BLR,BLX,BVY DOHC 16v Petrol direct inj. 4cyl
Jetta	2.0L BWA DOHC 16v Turbo petrol direct inj. 4cyl
Jetta	2.0L CCZA DOHC 16v Turbo petrol direct inj. 4cyl
Passat	1.8L CDAA,CEAA DOHC 16v Turbo petrol direct inj. 4cyl
Passat	2.0L BWA DOHC 16v Turbo petrol direct inj. 4cyl

**For a more detailed application listing visit [www.fuelmiser.co.nz](http://www.fuelmiser.co.nz)**

Information on this sheet is prepared as a customer aid, from reliable information, with the utmost care and should not be used for any other purpose. Motospecs reserves the right to make product or publication changes at any time without notice.  
© Copyright Motospecs, all rights reserved.

# Temperature Sensors

## CAT037 VOLKSWAGEN

Polo	1.8L BJX DOHC 20v Turbo 4cyl
Polo	1.8L BJX SOHC 8v Turbo 4cyl
Scirocco	2.0L CDLC DOHC 16v Turbo petrol direct inj. 4cyl
Tiguan	2.0L CAWA DOHC 16v Turbo petrol direct inj. 4cyl
Tiguan	2.0L CCZB DOHC 16v Turbo petrol direct inj. 4cyl

## CAT044 PEUGEOT

206 1.6L TU5JP SOHC 8v MPFI 4cyl
----------------------------------

## CAT045 BMW

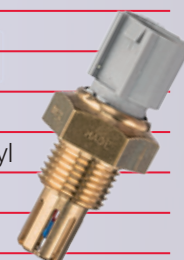
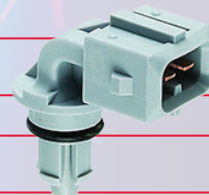
118d	2.0L N47D20 DOHC 16v Turbo diesel direct inj. 4cyl
123d	2.0L N47D20 DOHC 16v Turbo diesel direct inj. 4cyl
320d	2.0L N47D20 DOHC 16v Turbo diesel direct inj. 4cyl
520d	2.0L N47D20 DOHC 16v Turbo diesel direct inj. 4cyl
530d	3.0L N57D30 DOHC 24v Turbo diesel direct inj. 6cyl
X3	2.0L N47D20 DOHC 16v Turbo diesel direct inj. 4cyl
X3	3.0L M57D30 DOHC 24v Turbo diesel inj. 6cyl
X5	3.0L M57D30TU DOHC 24v Turbo diesel direct inj. 6cyl

## CAT048 TOYOTA

Hiace	2.5L 2KD-FTV DOHC 16v Turbo diesel inj. 4cyl
Hilux	3.0L 1KD-FTV DOHC 16v Turbo diesel direct inj. 4cyl
Landcruiser	4.2L 1HD-FTE SOHC 24v Turbo diesel inj. 6cyl
Landcruiser	4.5L 1VD-FTV DOHC-PB 32v Turbo diesel direct inj. V8
Landcruiser Prado	3.0L 1KD-FTV DOHC 16v Turbo diesel direct inj. 4cyl
Landcruiser Prado	3.0L 1KZ-TE SOHC 8v Turbo diesel inj. 4cyl
RAV4	2.2L 2AD-FTV DOHC 16v Turbo diesel direct inj. 4cyl

## CAT049 BMW

220d	2.0L N47D20 DOHC 16v Turbo diesel direct inj. 4cyl
520d	2.0L N47D20 DOHC 16v Turbo diesel direct inj. 4cyl
X3	3.0L N57D30 DOHC 24v Turbo diesel direct inj. 6cyl
X5	3.0L M57D30TU2 DOHC 24v Twin-turbo diesel direct inj. 6cyl
X5	3.0L N57D30A DOHC 24v Turbo diesel direct inj. 6cyl
X5	3.0L N57D30C DOHC 24v Tri-turbo diesel direct inj. 6cyl
X6	3.0L M57D30 DOHC 24v Turbo diesel inj. 6cyl



**For a more detailed application listing visit [www.fuelmiser.co.nz](http://www.fuelmiser.co.nz)**

Information on this sheet is prepared as a customer aid, from reliable information, with the utmost care and should not be used for any other purpose. Motospecs reserves the right to make product or publication changes at any time without notice.  
© Copyright Motospecs, all rights reserved.